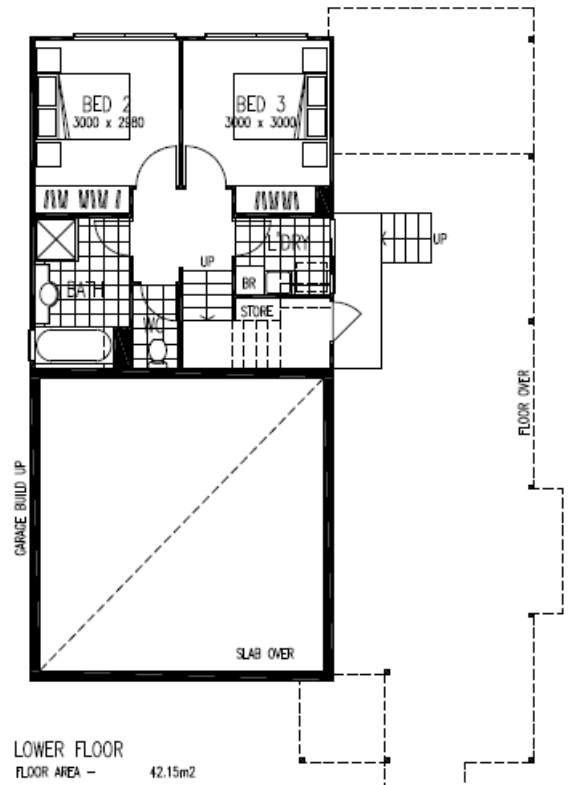
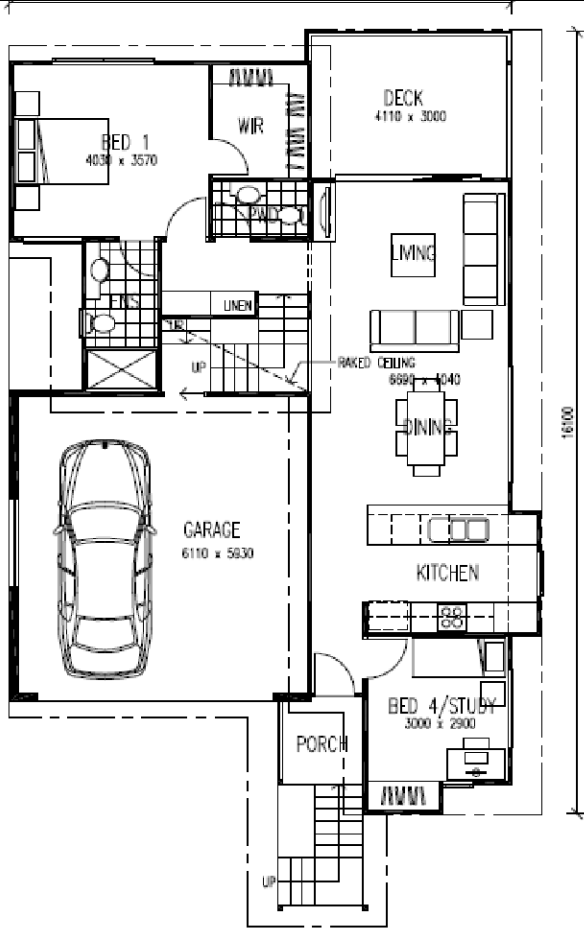


# HOUSE AND LAND PACKAGE

**SITE: Lot 43 John Francis Dr, Carrara**

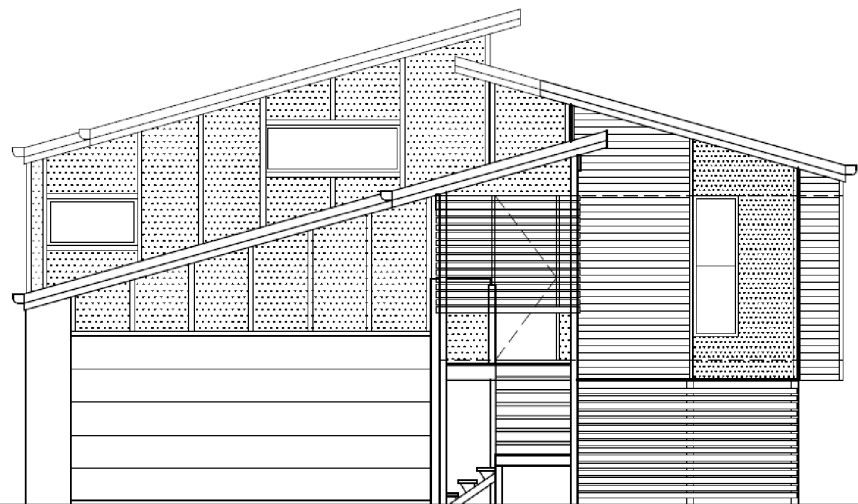
**FIXED BUILD PRICE: \$597,500.00**



This design has a substantial living area which merges through to a roofed deck. With three bedrooms and multipurpose this home has a lot to offer all members of the family.

- Site is elevated with a north easterly aspect giving views over Royal pines, Q1 and Surfers skyline
- Package includes—floor coverings, light fittings, driveway and Turf
- qualifies for government \$10,000 building boost

TOTAL HOME AREA: 186.7 SQM



[www.s28.com.au](http://www.s28.com.au)

Contact Peter Hamlyn on 0409 562 377

sanctuary28  
projects qld pty ltd

[www.s28.com.au](http://www.s28.com.au)

